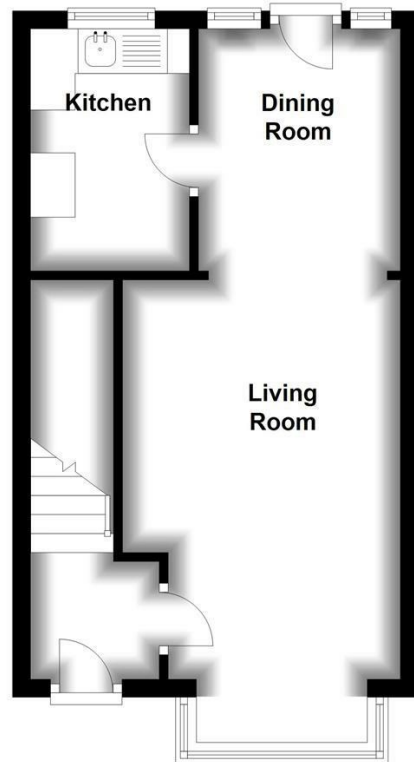




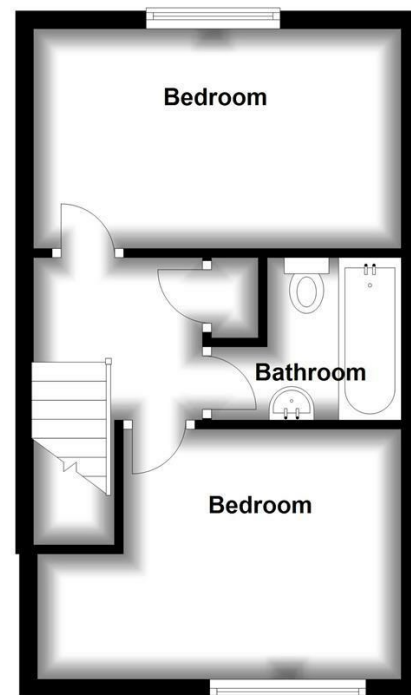
St Hughs Close, Prenton, Merseyside CH43 4YS



Ground Floor
Approx. 30.8 sq. metres (331.6 sq. feet)



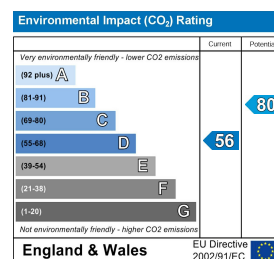
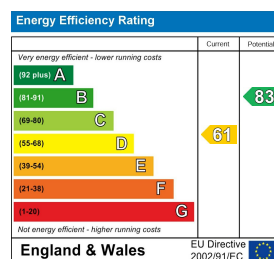
First Floor
Approx. 30.0 sq. metres (322.9 sq. feet)



Total area: approx. 60.8 sq. metres (654.5 sq. feet)

£95,000

New to the market this well appointed two bedroom end terraced property is available for sale with the benefit of no onward chain. In brief the property comprises of; Entrance hallway, living room/ dining room, kitchen and in need of some modernisation. To the first floor, there are two good sized bedrooms and a bathroom. Further benefiting from double glazing, front, rear garden, off road parking and being situated within easy reach of local amenities and transport links, a closer inspection is strongly recommended. To arrange a viewing please call a member of our sales team on 0151 609 2717.



St Hughs Close, Prenton, Merseyside CH43 4YS

Entrance Hall

Stairs leading to the first floor, radiator and alarm.

Living Room/Dining Room 23'7" x 10'1" (7.19 x 3.09)

Gas fire with surround, bay window, storage cupboard, radiators and door leading to the rear.

Kitchen 8'10" x 5'6" (2.70 x 1.7)

variety of storage cupboards, work surface, sink with drainer, boiler, space for washing machine, space for fridge freezer, space for cooker with overhead extractor and window.

First Floor Landing

Loft access and storage cupboard.

Bedroom One 13'5" x 9'2" (4.09 x 2.81)

Window with front aspect and radiator.

Bedroom Two 13'5" x 7'11" (4.09 x 2.43)

window with rear aspect and radiator.

Bathroom

Paneled bath with overhead shower, pedestal sink, low flush w.c, tiled walls and vinyl flooring.

Exterior

Front garden, off road parking and rear garden.

